



# For Lease

## Retail Space Available

- 63,100 SF Publix anchored shopping center
- Located less than 3 miles from downtown and Auburn University's campus
- Surrounded by new commercial and residential developments
- Strong traffic counts on East University with over 23,000 CPD

## Cotenants



The Shoppes at Cary Creek  
2900 E. University Dr.  
Auburn, AL

---

Buff Teague  
+1 251 341 1611  
[buff.teague@am.jll.com](mailto:buff.teague@am.jll.com)

Lisa Fawcett  
+1 251 301 7372  
[lisa.fawcett@am.jll.com](mailto:lisa.fawcett@am.jll.com)

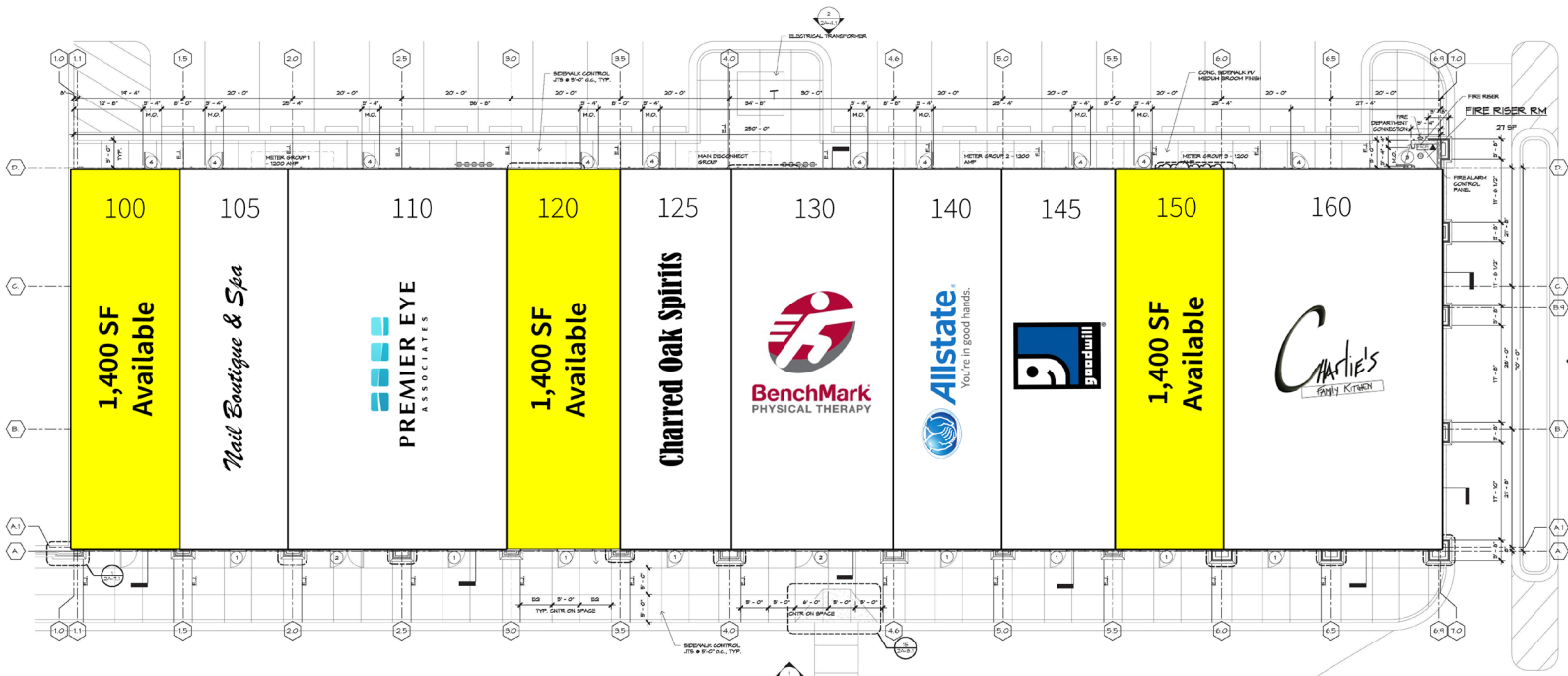
---

[jllretail.com](http://jllretail.com)

### DISCLAIMER

© 2021 Jones Lang LaSalle IP, Inc. All rights reserved. All information contained herein is from sources deemed reliable; however, no representation or warranty is made to the accuracy thereof.

# The Shoppes at Cary Creek



*Please Contact*

Buff Teague  
 +1 251 341 1611  
[buff.teague@am.jll.com](mailto:buff.teague@am.jll.com)

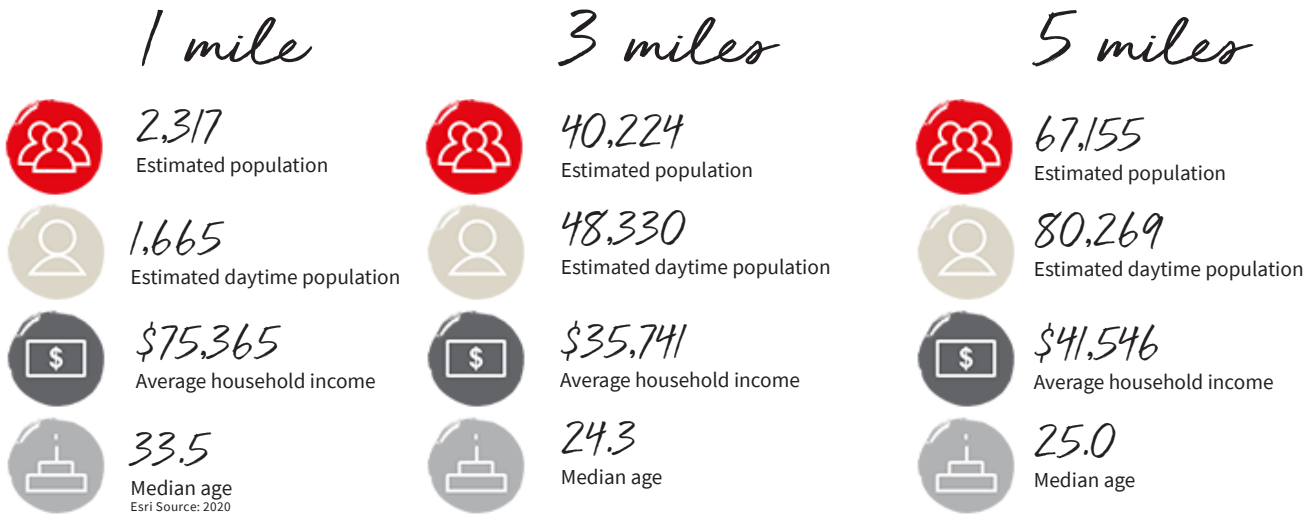
Lisa Fawcett  
 +1 251 301 7372  
[lisa.fawcett@am.jll.com](mailto:lisa.fawcett@am.jll.com)

**DISCLAIMER**  
 © 2021 Jones Lang LaSalle IP, Inc. All rights reserved. All information contained herein is from sources deemed reliable; however, no representation or warranty is made to the accuracy thereof.





**Estimated Demographics**



*Please Contact*

Buff Teague  
+1 251 341 1611  
[buff.teague@am.jll.com](mailto:buff.teague@am.jll.com)

Lisa Fawcett  
+1 251 301 7372  
[lisa.fawcett@am.jll.com](mailto:lisa.fawcett@am.jll.com)

**DISCLAIMER**  
© 2021 Jones Lang LaSalle IP, Inc. All rights reserved. All information contained herein is from sources deemed reliable; however, no representation or warranty is made to the accuracy thereof.

